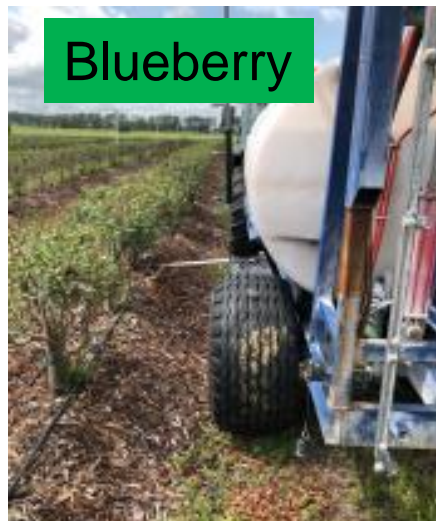
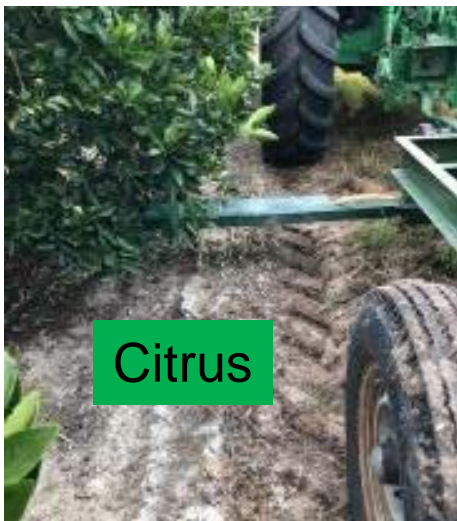


Combined Application of CrabLife Powder and Tamarack 10-0-0 to Optimize Root Growth



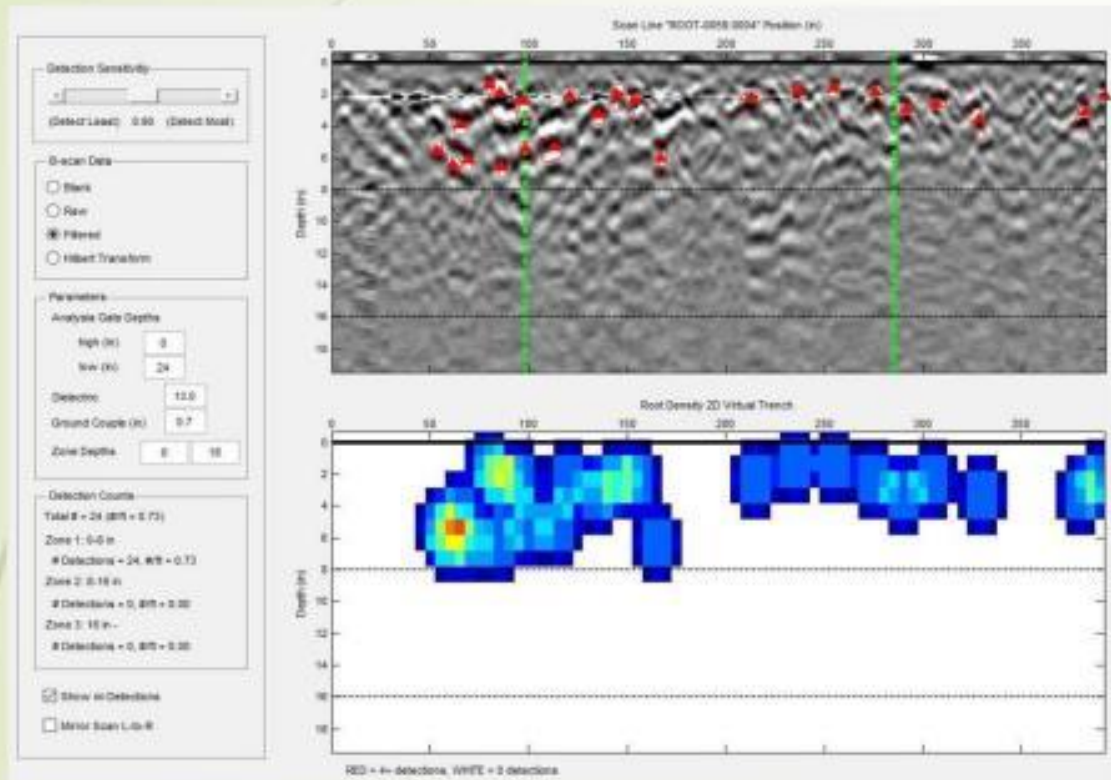
A Ground Penetrating Radar (GPR) Based Evaluation of Rootstock Response to the Application of Fertilizer of Natural Origin in Orchards and Vineyards

Dr. John Bushoven and Dr. Dilruba Yeasmin

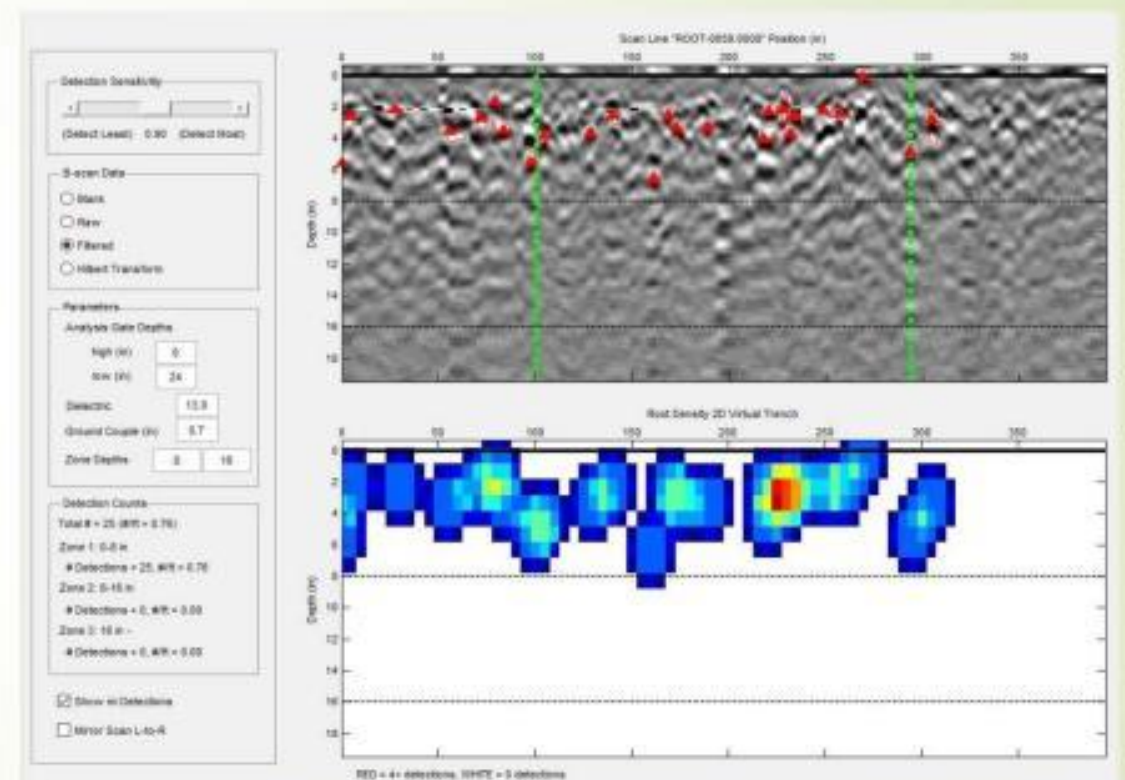
Department of Horticultural Science
California State University Fresno

Scan Result (Cherry orchard sample)

► Treatment scan (two trees, 33 feet linear scan)



Scan from Left side of the tree row,
Total shallow roots detected: 24 (within
about 12 inches depth)

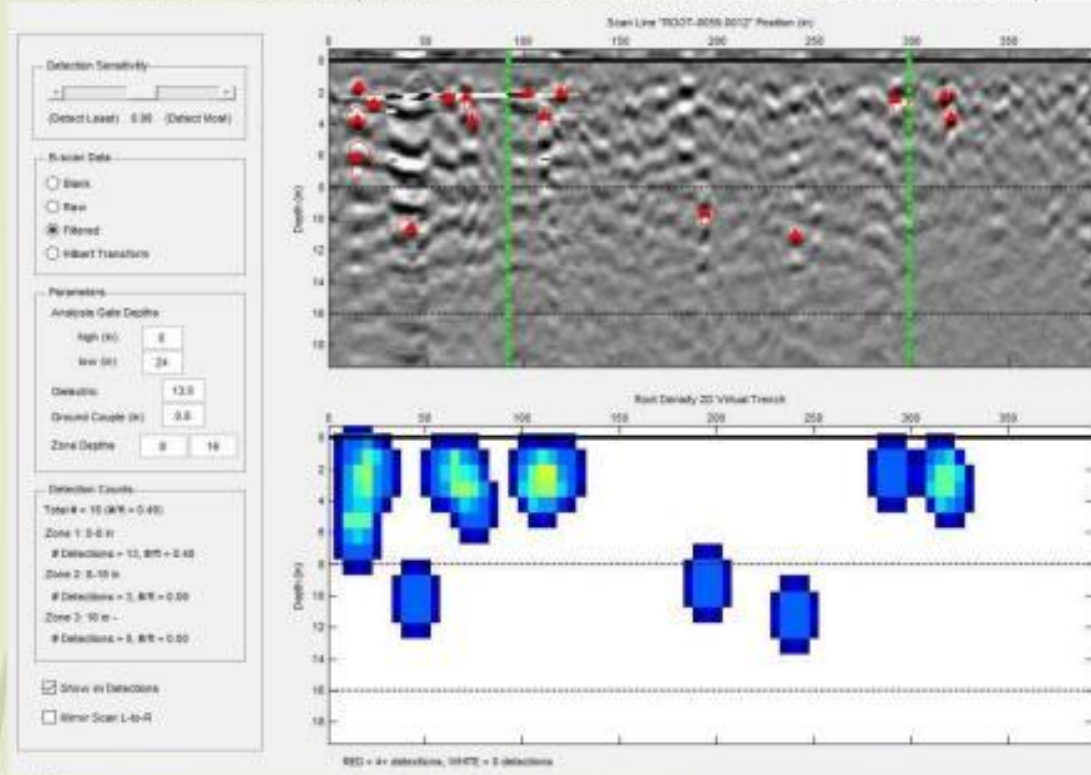


Scan from right side of tree row,
Total shallow root detected: 25 (within
about 12 inches depth)

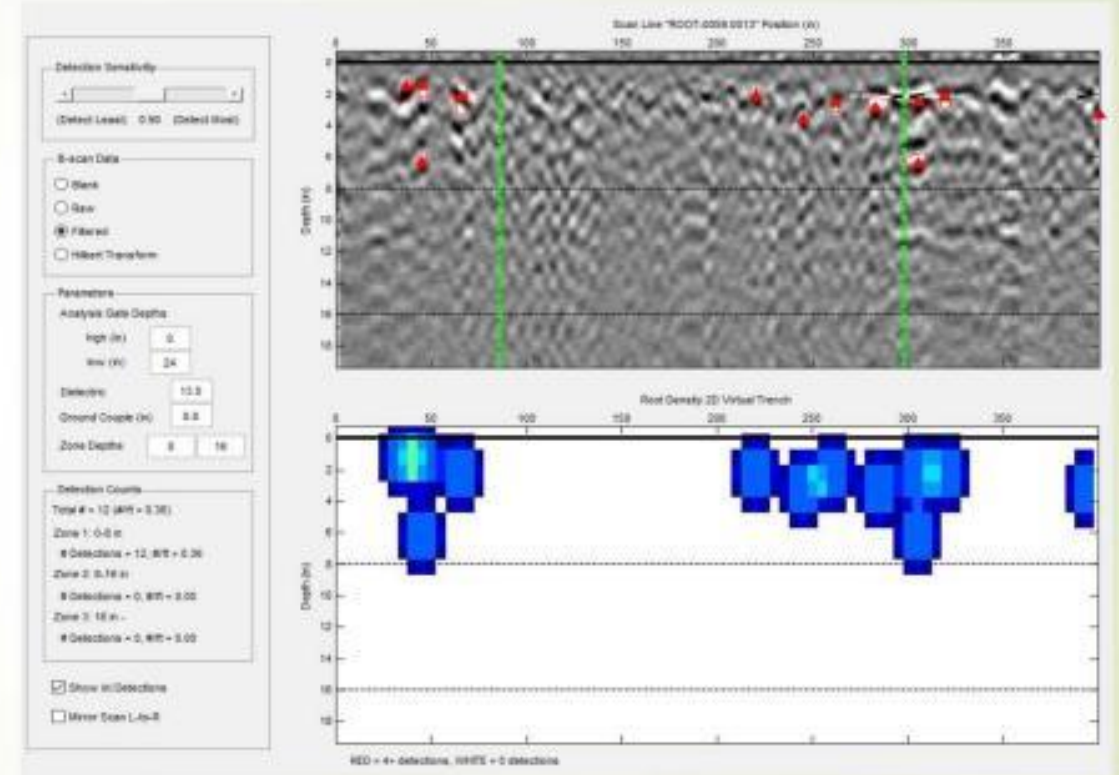
Total roots detected: 49

Scan Result (Cherry orchard sample)

Control scan (two trees, 33 feet linear scan)



Scan from Left side of the tree row,
Total shallow roots detected: 16 (within
about 12 inches depth)



Scan from right side of tree row,
Total shallow root detected: 12 (within about
12 inches depth)

Total roots detected: 28

Effect of fall application of CrabLife Powder and Tamarack 10-0-0 on cherry bloom

Untreated control

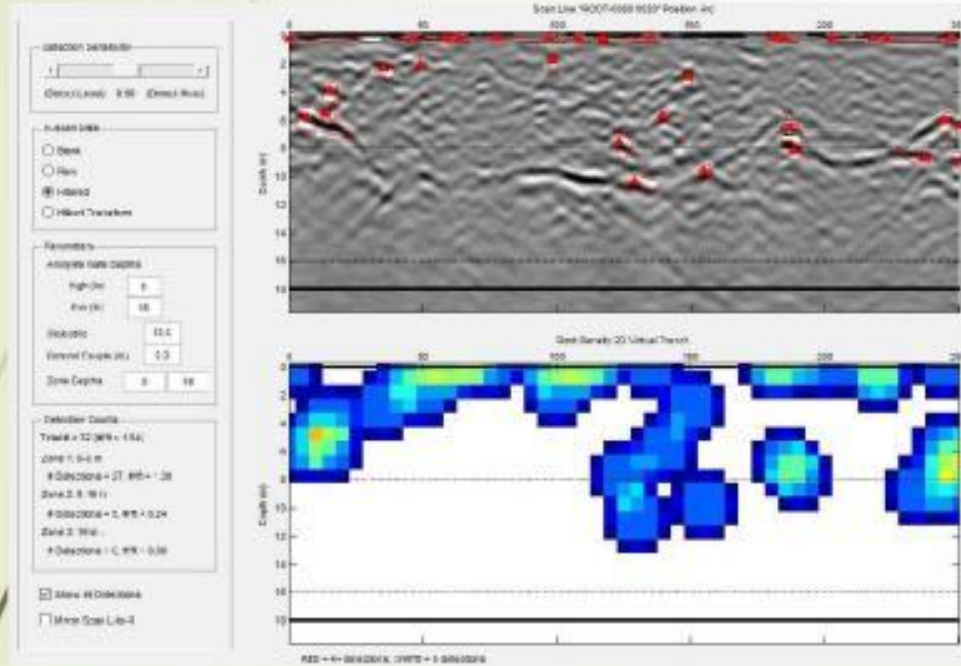


Two fall applications

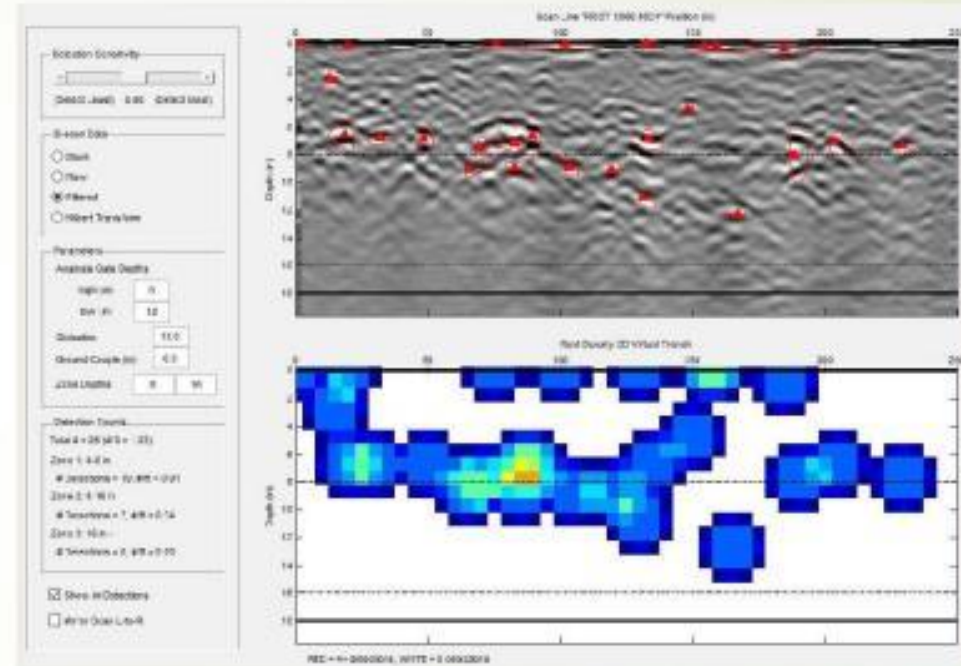


Scan Result (Vineyard sample)

- **Treatment scan** (two trees, 21 feet linear scan)



Scan from Left side of the tree row,
Total shallow roots detected: 32 (within
about 12 inches depth)

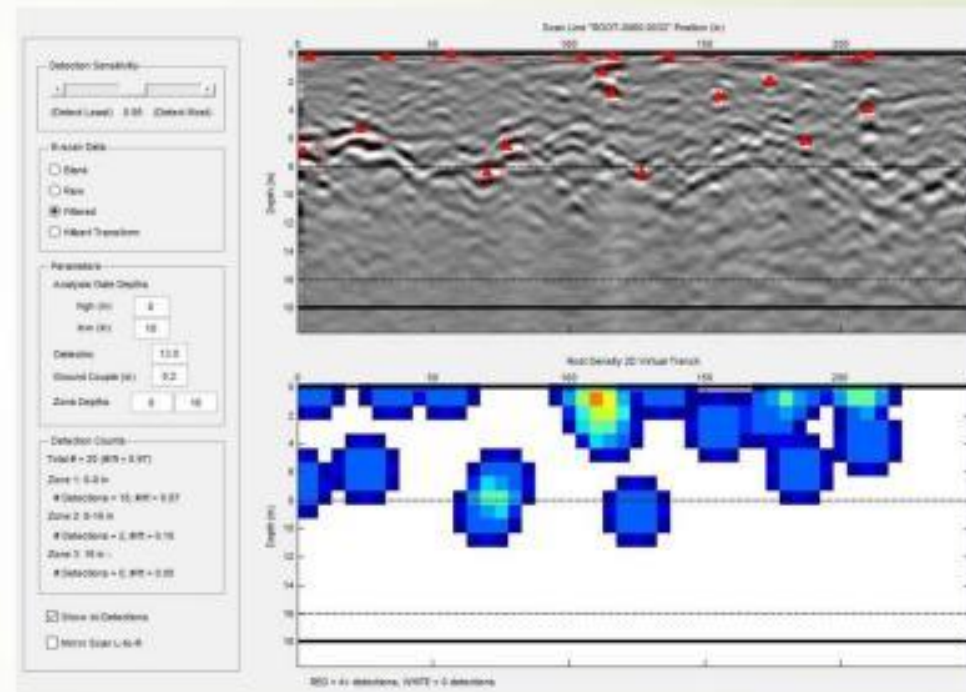
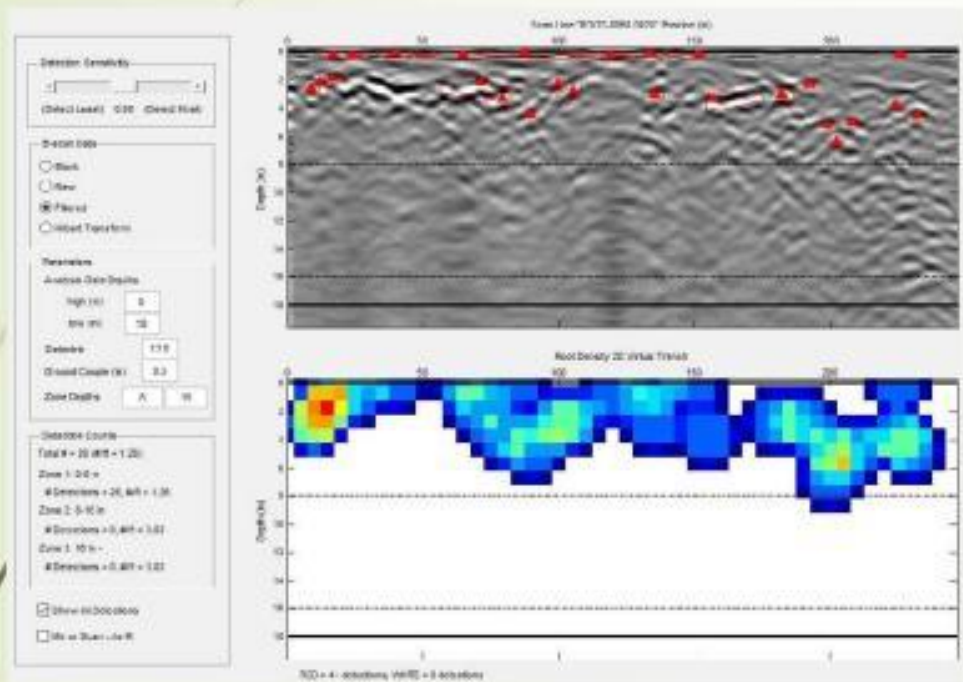


Scan from right side of the tree row,
Total shallow roots detected: 26 (within
about 12 inches depth)

Total roots detected: 58

Scan Result (Vineyard sample)

- Control scan (two trees, 21 feet linear scan)



Total roots detected: 46